

DRAGON EXPRESS



Let's Explore Chinese Language & Culture!

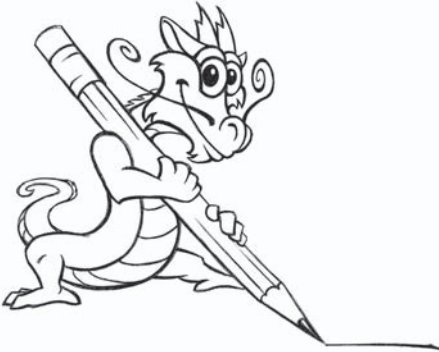
THE MOON GODDESS, CHANG E

According to Chinese legends, a beautiful woman named Chang E lives on the moon with a jade rabbit. During the Mid-Autumn Festival in September, Chinese people gaze up at the moon, eat moon cakes and honor the Moon Goddess, Chang E.



WRITING CHINESE CHARACTERS

Let's write the Chinese character "yuè" which means "moon."



月	月	月	月	月
月	月			

Want to Learn More About China?

Check out Dragon Express activity kits at RicePaperKite.com!



- Mandarin Language CDs
- Chinese Folktales
- Holiday Activities
- Arts and Crafts
- History Projects
- Cultural Games
- Chinese Songs
- Character Writing
- Fun and Learning